

TECNA®

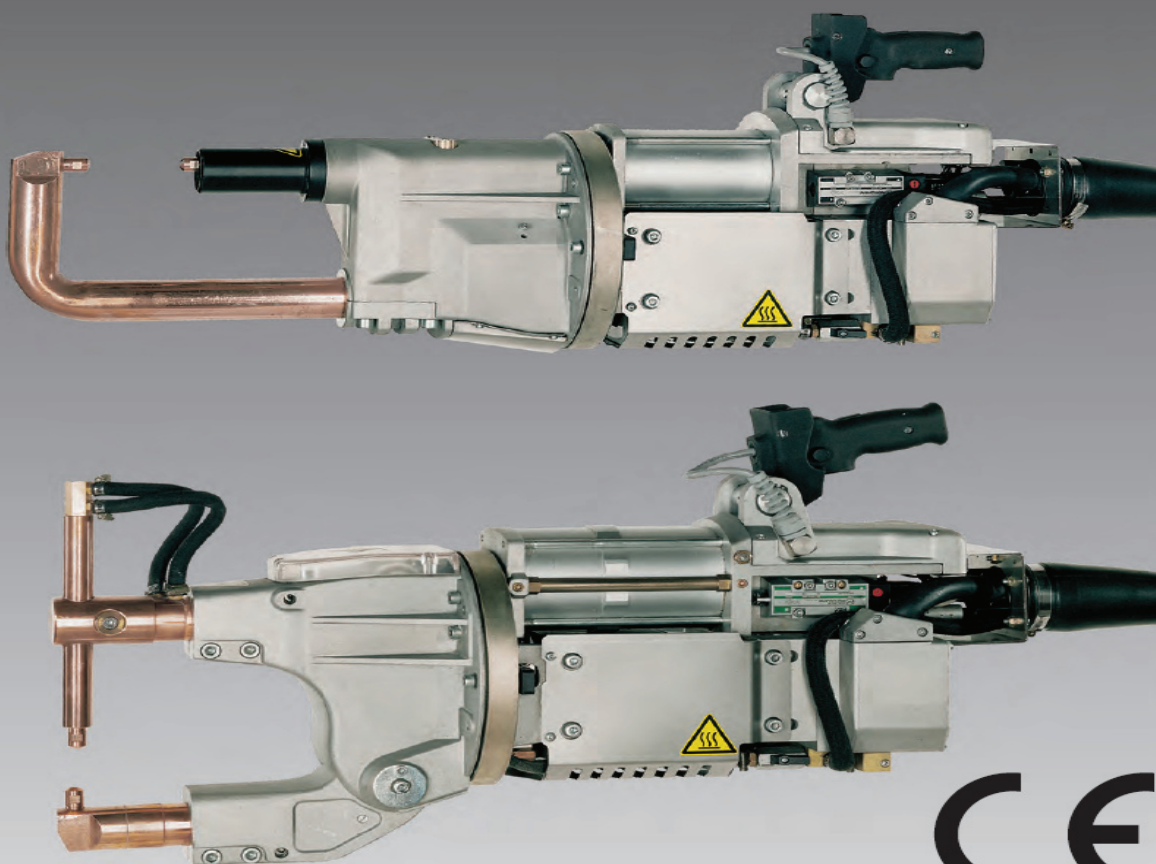
Italy

TECNA®

PUNKT APARATI - RUČNA KLEŠTA - INDUSTRIJSKA - MF

MF
3-PHASE INVERTER

MEDIA FREQUENZA 1000 Hz
MEDIUM FREQUENCYS 1000 Hz
MITTELFREQUENZ 1000 Hz



**3062 - 3184 - RUČNI " MF 1000 Hz " INDUSTRIJSKI
PUNKT APARATI VODOM HLAĐENI SA PNEUMATSKIM
RUČNIM OKIDAČEM - PREKIDAČEM I ZASEBNOM MF
KONTROLNOM JEDINICOM, 56 - 90KVA**

ALATISTHERM

ALATISTHERM d.o.o , Koče Kapetana 25
35230 Čuprija - Srbija ; +381 (0) 35 8471-196
+381 (0) 65 2771-802 / +381 (0) 65 8410-651

TECNA®

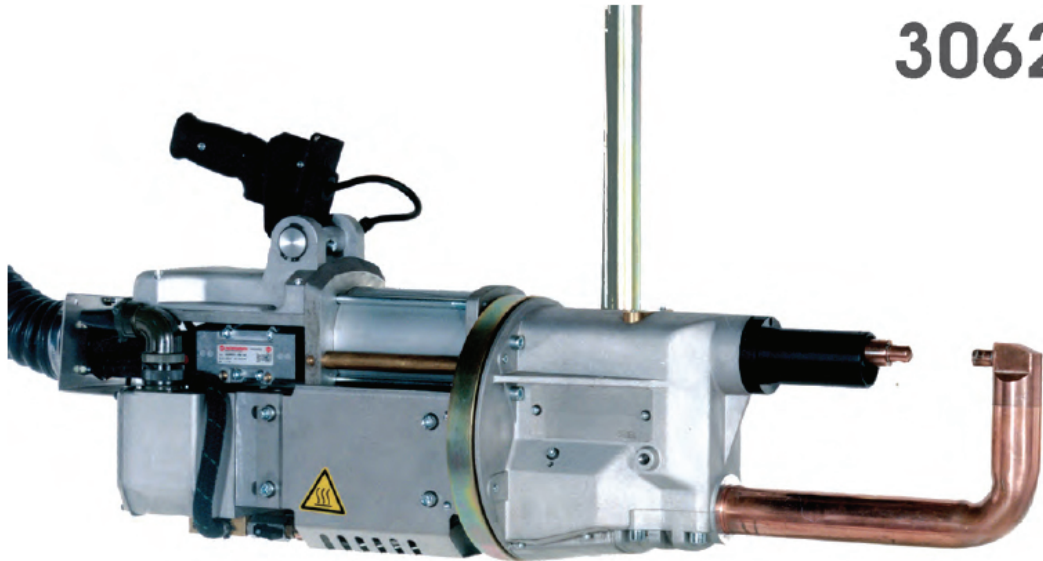
Italy

TECNA®

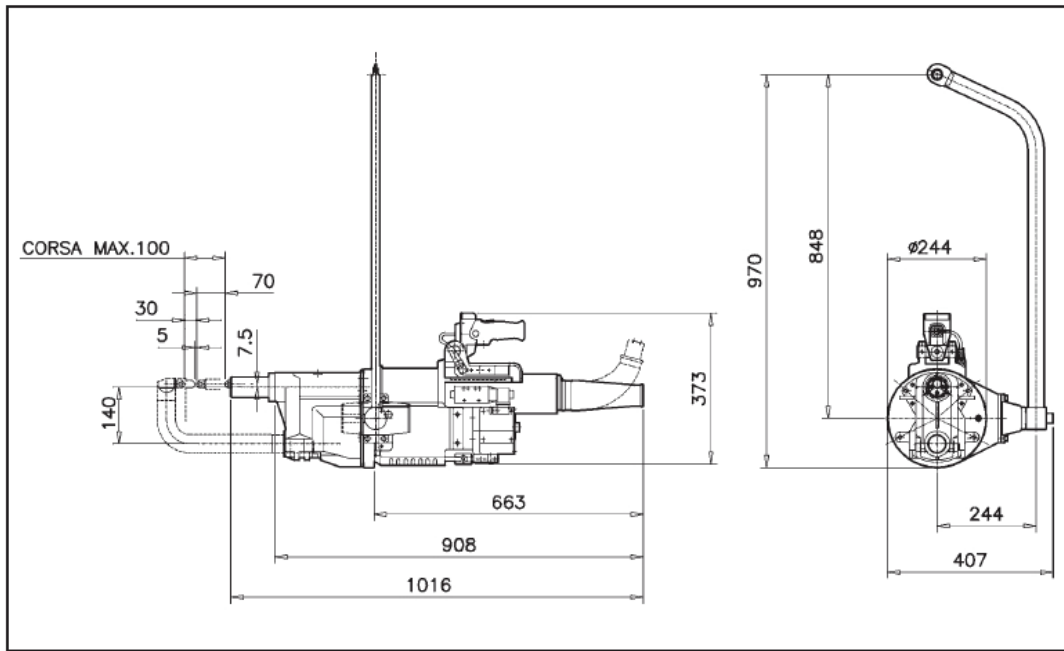
C-TYPE

PUNTATRICI PENSILI PNEUMATICHE DA PRODUZIONE - AIR OPERATED PRODUCTION SPOT WELDING GUNS - PNEUMATISCHE PRODUKTIONS - PUNKTSCHWEISSZANGEN

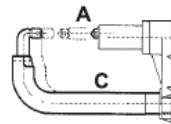
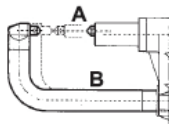
3062



1



BRACCI - ARMS - ARME



Art. / Item 3062

BRACCI - ARMS - ARME Ø 45 CP

L (mm)	A	B	C
	4401	4402	4403

ARTICOLO ITEM ARTIKEL	POTENZA POWER LEISTUNG	INTERASSE GAP ACHSABST.	FORZA daN FORCE daN KRAFT daN	ALES. CILINDRO CYLIND. BORE BOHR. ZYLINDER	CORRENTE CC. SC. CURRENT STROM CC	DIAMETRO INNESTO BRACCI ARMS TAPER DURCHM. EINSATZ ARME	PESO NETTO NET WEIGHT GEWICHT NETTO
	kVA AL 20% kVA AL 50%	MIN./MAX. mm	A 6 bar A 8 bar	Ø mm,	kA	N.I. mm, I. mm.	kg
3062	88 56	-	375 500	90	25	44 42	53

PESO NETTO CON SOSPENSIONE E SENZA BRACCI - NET WEIGHT WITH SUSPENSION AND WITHOUT ARMS - NETTO-GEWICHT MIT KUGELLAGERRUNDFUHRUNG OHNE ARME

N.I. = NON ISOLATI - NOT INSULATED - NICHT ISOLIERT

I. = ISOLATI - INSULATED - ISOLIERT

3062-3066

ALATISTHERM

ALATISTHERM d.o.o, Koče Kapetana 25
35230 Čuprija - Srbija ; +381 (0) 35 8471-196
+381 (0) 65 2771-802 / +381 (0) 65 8410-651

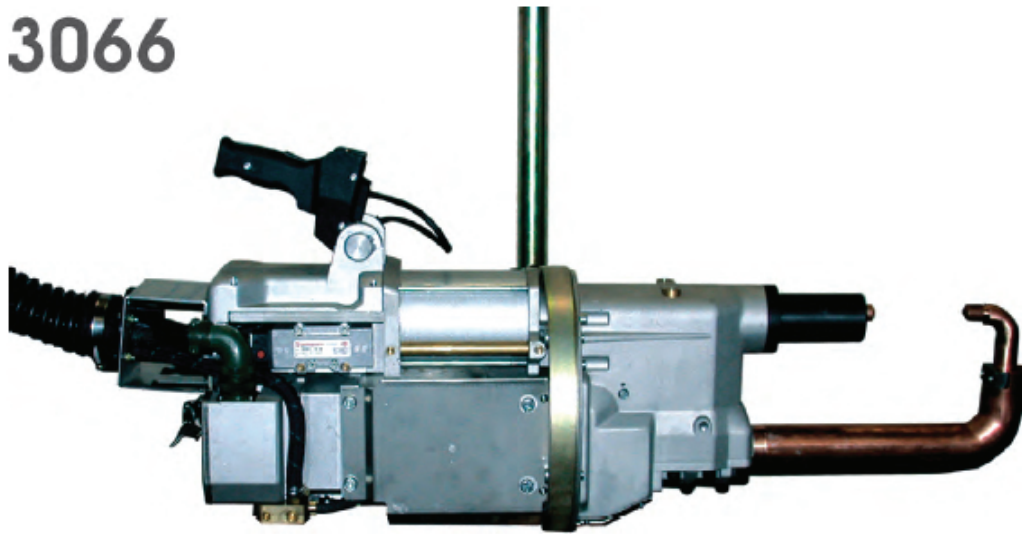
NAPOMENA : TECNA ne proizvodi rashladne jedinice i kompresore. Ove elemente nabavljate sami prema potrebnim protocima

TECNA®

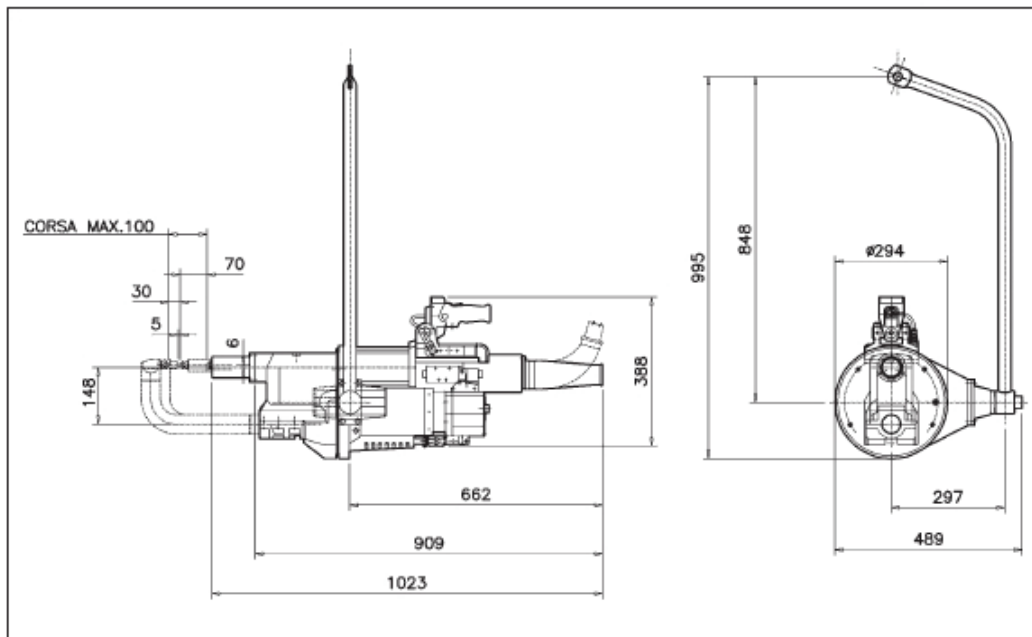
Italy

TECNA®

🇮🇹 PUNTATRICI PENSILI PNEUMATICHE DA PRODUZIONE - 🇨🇷 AIR OPERATED PRODUCTION SPOT
WELDING GUNS - 🇩🇪 PNEUMATISCHE PRODUKTIONS-PUNKTSCHWEISSZANGEN

3066

2



🇮🇹 BRACCI - 🇨🇷 ARMS - 🇩🇪 ARME



Art. / Item 3066

BRACCI - ARMS - ARME Ø 50 CG

L (mm)	A	B	C
	4410	4411	4412

ARTICOLO ITEM ARTIKEL	POTENZA POWER LEISTUNG	INTERASSE GAP ACHSABST.	FORZA daN FORCE daN KRAFT daN	ALES. CILINDRO CYLIND. BORE BOHR. ZYLINDER	CORRENTE CC. DC. CURRENT STROM CC.	DIAMETRO INNESTO BRACCI ARMS TAPER DURCHM. EINSATZ ARME	PESO NETTO NET WEIGHT GEWICHT NETTO
	kVA AL 20% kVA AL 50%	MIN./MAX. mm	A 6 bar A 8 bar	Ø mm.	kA	N.L. mm. I. mm.	kg
3066	142 90	-	465 620	100	30	49 47	63
PESO NETTO CON SOSPENSIONE E SENZA BRACCI - NET WEIGHT WITH SUSPENSION AND WITHOUT ARMS - NETTO-GEWICHT MIT KUGELLAGERUNDFUHRUNG OHNE ARME							
N.L. = NON ISOLATI - NOT INSULATED - NICHT ISOLIERT				I. = ISOLATI - INSULATED - ISOLIERT			

C-TYPE

3062-3066

ALATISTHERM

ALATISTHERM d.o.o., Koče Kapetana 25
35230 Čuprija - Srbija ; +381 (0) 35 8471-196
+381 (0) 65 2771-802 / +381 (0) 65 8410-651

NAPOMENA : TECNA ne proizvodi rashladne jedinice i kompresore. Ove elemente nabavljate sami prema potrebnim protocima

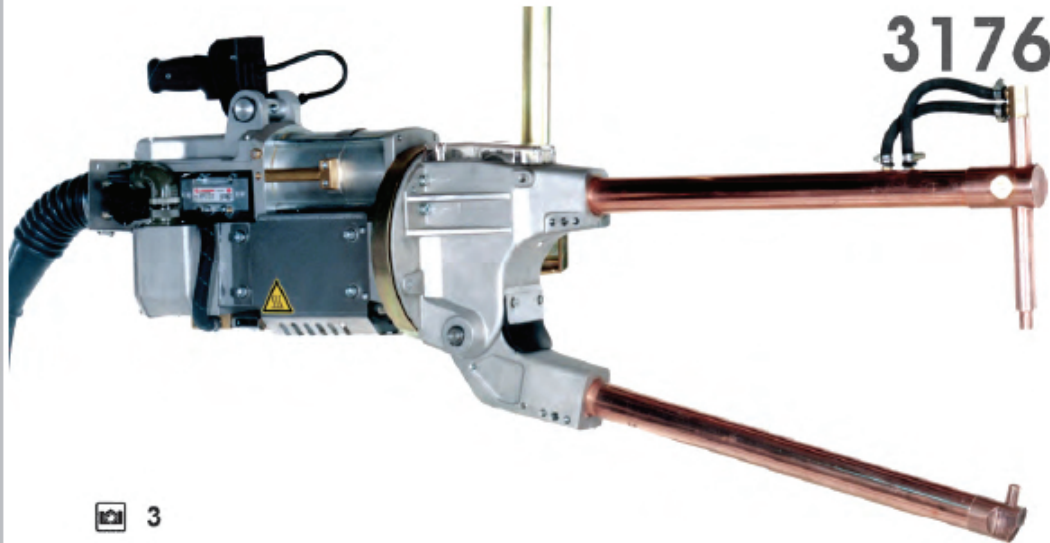
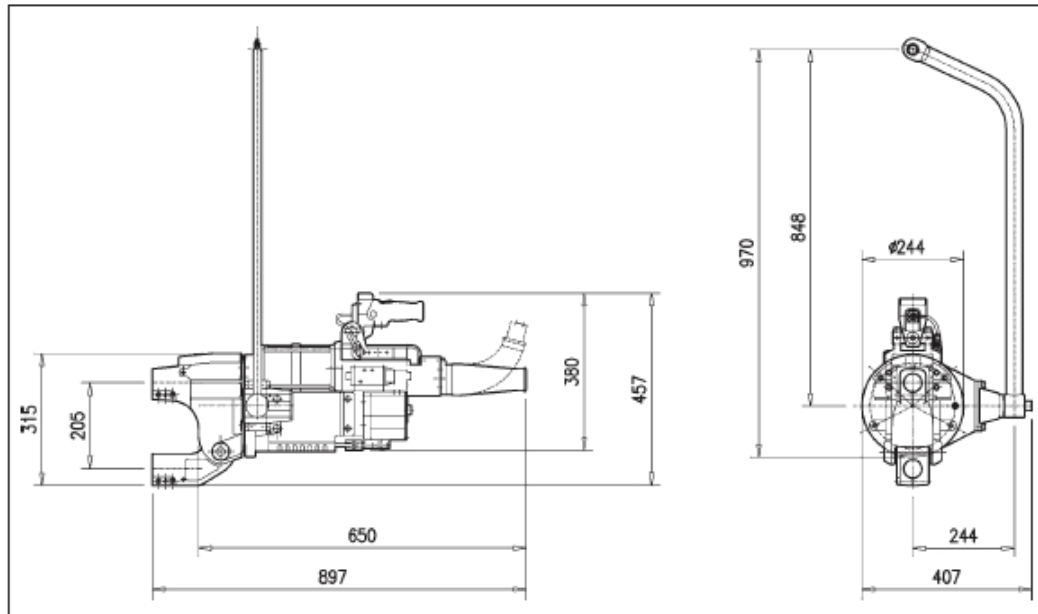
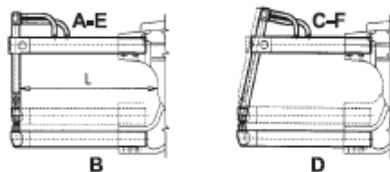
TECNA®

Italy

TECNA®

L-TYPE

 PUNTATRICI PENSILI PNEUMATICHE DA PRODUZIONE -
  AIR OPERATED PRODUCTION SPOT WELDING GUNS -
  PNEUMATISCHE PRODUKTIONS-PUNKTSCHWEISSZANGEN


 3

 BRACCI -  ARMS -  ARME


BRACCI - ARMS - ARME Ø 45 L / LL									
L (mm)	A	B	C	D	E	F	F (6 bar) daN	F (8 bar) daN	Ø 45kg
190	4460	4464*	4461	4465*	**	**	340	450	-5,3
250	4466	4470	4467	4471	4468	4469	270	360	-6,4
350	4472	4476	4473	4477	4474	4475	200	270	-8,3
508	4478	4482	4479	4483	4480	4481	150	195	-11,5
650	4484	4488	4485	4489	4486	4487	115	155	-14,2
800	4490	4494	4491	4495	**	**	95	130	-17

* SOLO PER L - ** NON PREVISTI / * FOR L* ARMS ONLY - ** NOT AVAILABLE / * NUR FÜR L* ARME - ** NICHT VORGESEHEN

ARTICOLO ITEM ARTIKEL	POTENZA POWER LEISTUNG	INTERASSE GAP ACHSABST.	FORZA daN FORCE daN KRAFT daN	ALES. CILINDRO CYLIND. BORE BOHRZYLINDER	CORRENTE CC. SC. CURRENT STROM CC	DIAMETRO INNESTO BRACCI ARMS TAPER DURCHM.EINSATZ ARME	PESO NETTO NET WEIGHT GEWICHT NETTO
	kVA AL 20% kVA AL 50%	MIN./MAX. mm	A 6 bar A 8 bar	Ø mm	kA	N, mm, L, mm.	kg
3176	88 56	205/205	340 450	100	25	44 42	55

PESO NETTO CON SOSPENSIONE E SENZA BRACCI - NET WEIGHT WITH SUSPENSION AND WITHOUT ARMS - NETTO-GEWICHT MIT KUGELLAGERRUNDFUHRUNG OHNE ARME

N.L. = NON ISOLATI - NOT INSULATED - NICHT ISOLIERT

I. = ISOLATI - INSULATED - ISOLIERT

3176-3177

ALATISTHERM

ALATISTHERM d.o.o , Koče Kapetana 25
 35230 Čuprija - Srbija ; +381 (0) 35 8471-196
 +381 (0) 65 2771-802 / +381 (0) 65 8410-651

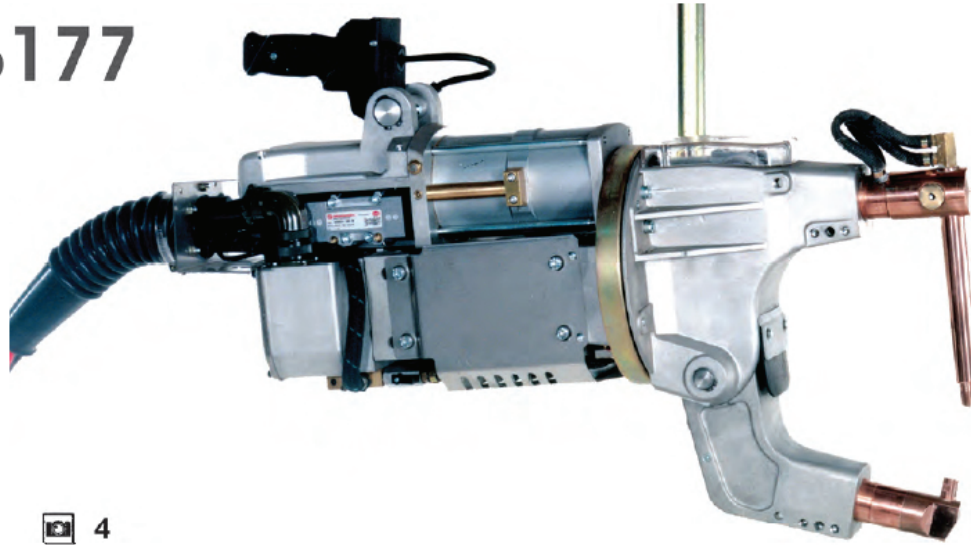
TECNA®

Italy

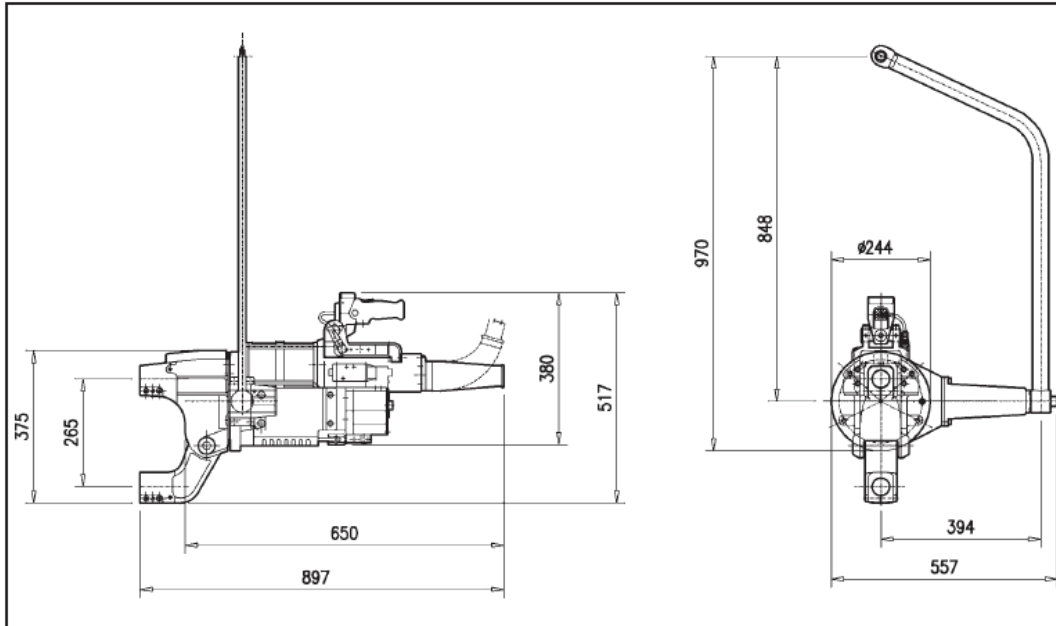
TECNA®

PUNTATRICI PENSILI PNEUMATICHE DA PRODUZIONE - AIR OPERATED PRODUCTION SPOT WELDING GUNS - PNEUMATISCHE PRODUKTIONS-PUNKTSCHWEISSZANGEN

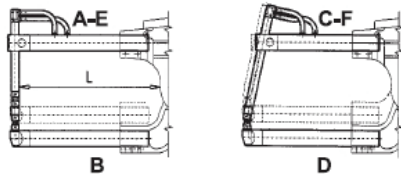
3177



4



BRACCI - ARMS - ARME



BRACCI - ARMS - ARME Ø 45 L / LL									
L (mm)	A	B	C	D	E	F	F (6 bar) daN	F (8 bar) daN	Ø 45/kg
190	4460	4464*	4461	4465*	**	**	340	450	-5,3
250	4466	4470	4467	4471	4468	4469	270	360	-6,4
350	4472	4476	4473	4477	4474	4475	200	270	-8,3
508	4478	4482	4479	4483	4480	4481	150	195	-11,5
650	4484	4488	4485	4489	4486	4487	115	155	-14,2
800	4490	4494	4491	4495	**	**	95	130	-17

* SOLO PER L - ** NON PREVISTI / * FOR L* ARMS ONLY - ** NOT AVAILABLE / * NUR FÜR L* ARME - ** NICHT VORGESEHEN

ARTICOLO ITEM ARTIKEL	POTENZA POWER LEISTUNG		INTERASSE GAP ACHSABST.	FORZA daN FORCE daN KRAFT daN		ALES. CILINDRO CYLIND. BORE BOHRZYLINDER	CORRENTE CC. SC. CURRENT STROM CC	DIAMETRO INNESTO BRACCI ARMS TAPER DURCHM.EINSATZ ARME		PESO NETTO NET WEIGHT GEWICHT NETTO
	kVA AL 20%	kVA AL 50%		MIN./MAX. mm	A 6 bar			A 8 bar	Ø mm.	
3177	88	56	265/265	340	450	100	25	44	42	55,5

PESO NETTO CON SOSPENSIONE E SENZA BRACCI - NET WEIGHT WITH SUSPENSION AND WITHOUT ARMS - NETTO-GEWICHT MIT KUGELLAGERRUNDFÜHRUNG OHNE ARME

N.L.= NON ISOLATI - NOT INSULATED - NICHT ISOLIERT

I.= ISOLATI - INSULATED - ISOLIERT

3176-3177

ALATISTHERM

ALATISTHERM d.o.o, Koče Kapetana 25
35230 Čuprija - Srbija ; +381 (0) 35 8471-196
+381 (0) 65 2771-802 / +381 (0) 65 8410-651

NAPOMENA : TECNA ne proizvodi rashladne jedinice i kompresore. Ove elemente nabavljate sami prema potrebnim protocima

TECNA®

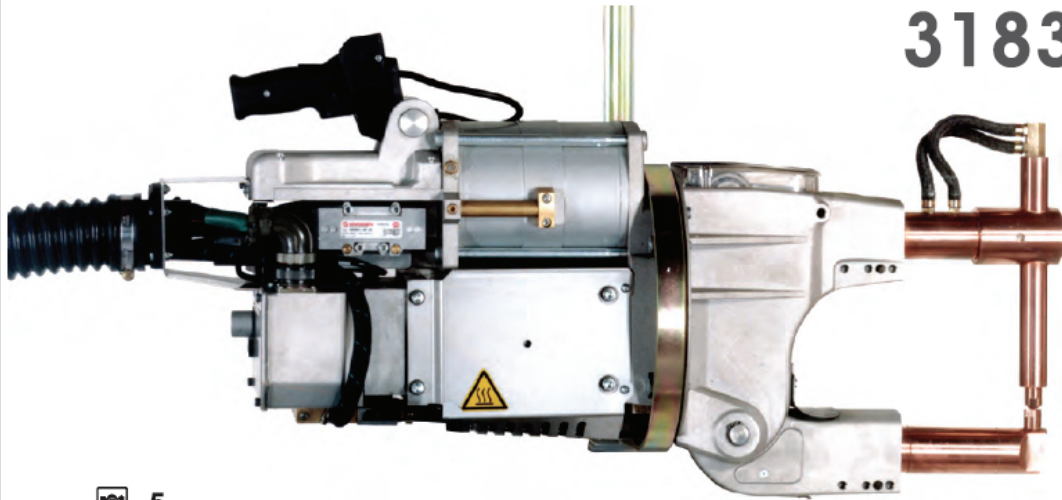
Italy

TECNA®

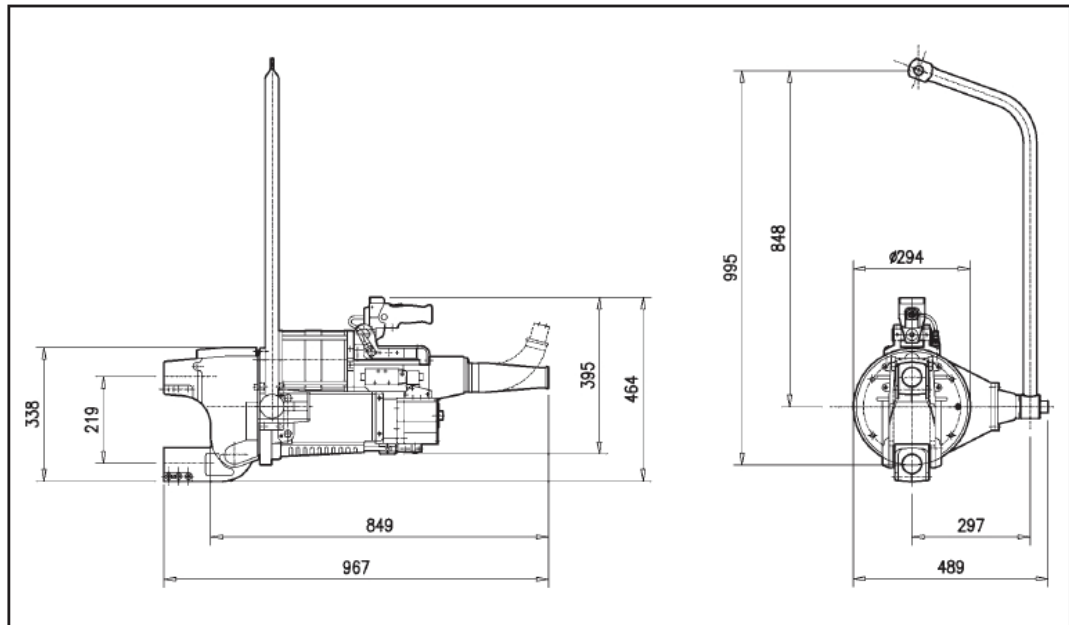
L-TYPE

🇮🇹 PUNTATRICI PENSILI PNEUMATICHE DA PRODUZIONE - 🇺🇸 AIR OPERATED PRODUCTION SPOT WELDING GUNS - 🇩🇪 PNEUMATISCHE PRODUKTIONS - PUNKTSCHWEISSZANGEN

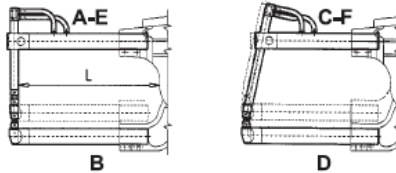
3183



📷 5



🇮🇹 BRACCI - 🇺🇸 ARMS - 🇩🇪 ARME



Art. / Item 3183-3184										
BRACCI - ARMS - ARME Ø 50 L / LL										
L (mm)	A	B	C	D	E	F	F (6 bar) daN	F (8 bar) daN	Ø 50kg	
255	4420	4424*	**	**	4422	**	645	855	-9	
408	4426	4430	4427	4431	4428	4429	430	575	-13	
610	4432	4436	4433	4437	4434	4435	300	400	-17	
820	4438	4442	4439	4443	4440	4441	230	305	-22	
1030	4444	4448	**	**	4446	**	185	245	-28	

* SOLO PER L - ** NON PREVISTI / * FOR "L" ARMS ONLY - ** NOT AVAILABLE / * NUR FÜR "L" ARME - ** NICHT VORGESEHEN

ARTICOLO ITEM ARTIKEL	POTENZA POWER LEISTUNG		INTERASSE GAP ACHSABST.	FORZA daN FORCE daN KRAFT daN		ALES. CILINDRO CYLIND. BORE BOHRZYLINDER	CORRENTE CC. SC. CURRENT STROM CC.	DIAMETRO INNESTO BRACCI ARMS TAPER DURCHM.EINSATZ ARME		PESO NETTO NET WEIGHT GEWICHT NETTO
	kVA AL 20%	kVA AL 50%	MIN./MAX. mm	A 6 bar	A 8 bar	Ø mm.	kA	N.I. mm.	L mm.	kg
3183	142	90	219/219	645	855	140	30	49	47	75

PESO NETTO CON SOSPENSIONE E SENZA BRACCI - NET WEIGHT WITH SUSPENSION AND WITHOUT ARMS - NETTO-GEWICHT MIT KUGELLAGERUNDFÜHRUNG OHNE ARME

N.I.= NON ISOLATI - NOT INSULATED - NICHT ISOLIERT

ALATISTHERM d.o.o , Koče Kapetana 25
35230 Čuprija - Srbija ; +381 (0) 35 8471-196
+381 (0) 65 2771-802 / +381 (0) 65 8410-651

ALATISTHERM

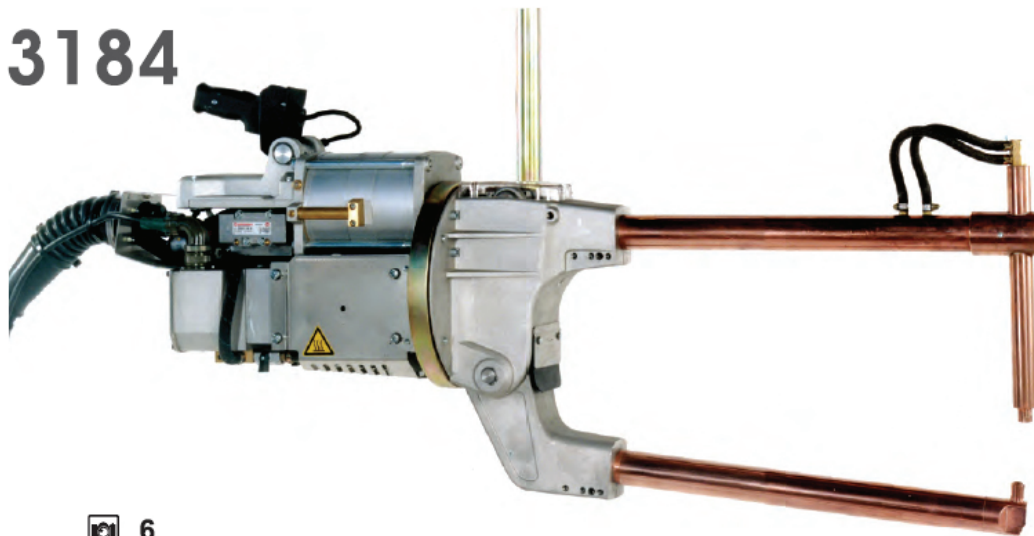
NAPOMENA : TECNA ne proizvodi rashladne jedinice i kompresore. Ove elemente nabavljate sami prema potrebnim protocima

TECNA®

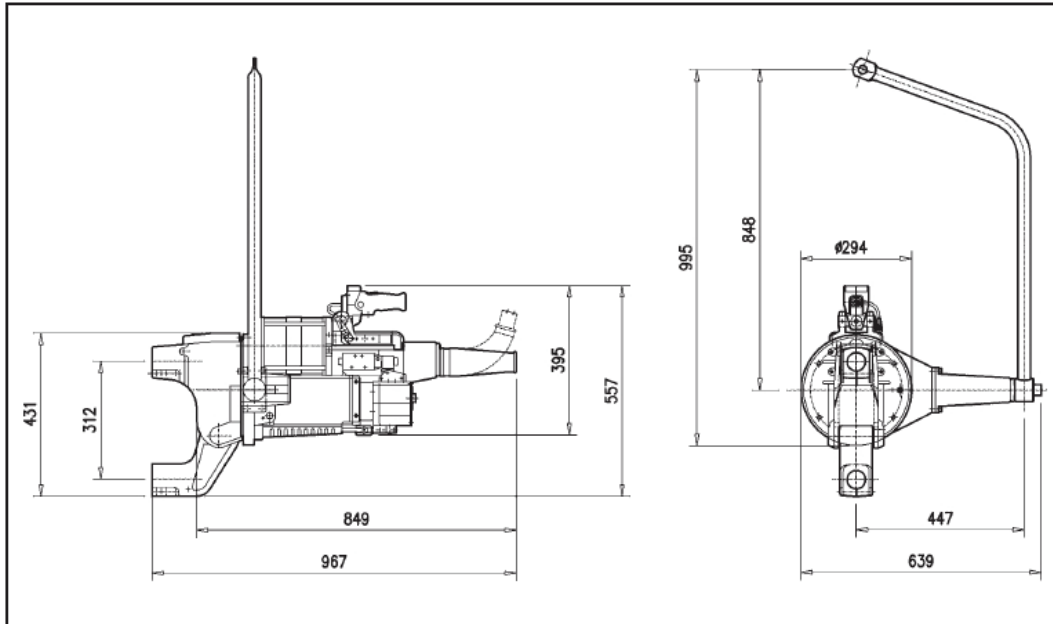
Italy

TECNA®

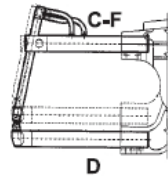
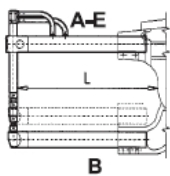
PUNTATRICI PENSILI PNEUMATICHE DA PRODUZIONE - AIR OPERATED PRODUCTION SPOT
 WELDING GUNS - PNEUMATISCHE PRODUKTIONS - PUNKTSCHWEISSZANGEN

3184

6



BRACCI - ARMS - ARME



Art. / Item 3183 - 3184										
BRACCI - ARMS - ARME Ø 50 L / LL										
L (mm)	A	B	C	D	E	F	F (6 bar) daN	F (8 bar) daN	Ø 50/kg	
255	4420	4424*	**	**	4422	**	645	855	-9	
408	4426	4430	4427	4431	4428	4429	430	575	-13	
610	4432	4436	4433	4437	4434	4435	300	400	-17	
820	4438	4442	4439	4443	4440	4441	230	305	-22	
1030	4444	4448	**	**	4446	**	185	245	-28	

* SOLO PER L - ** NON PREVISTI / * FOR 'L' ARMS ONLY - ** NOT AVAILABLE / * NUR FÜR 'L' ARME - ** NICHT VORGESEHEN

ARTICOLO ITEM ARTIKEL	POTENZA POWER LEISTUNG		INTERASSE GAP ACHSABST.	FORZA daN FORCE daN KRAFT daN		ALES. CILINDRO CYLIND. BORE BOHR.ZYLINDER	CORRENTE CC. SC. CURRENT STROM CC	DIAMETRO INNESTO BRACCI ARMS TAPER DURCHM.EINSATZ ARME		PESO NETTO NET WEIGHT GEWICHT NETTO
	kVA AL 20%	kVA AL 50%	MIN./MAX. mm	A 6 bar	A 8 bar	Ø mm.	kA	N.I. mm.	I. mm.	kg
3184	142	90	312/312	645	855	140	30	49	47	76

PESO NETTO CON SOSPENSIONE E SENZA BRACCI - NET WEIGHT WITH SUSPENSION AND WITHOUT ARMS - NETTO-GEWICHT MIT KUGELLAGERRUNDFOHRUNG OHNE ARME
 N.I. = NON ISOLATI - NOT INSULATED - NICHT ISOLIERT I. = ISOLATI - INSULATED - ISOLIERT

L-TYPE

3183-3184

ALATISTHERM

ALATISTHERM d.o.o , Koče Kapetana 25
 35230 Čuprija - Srbija ; +381 (0) 35 8471-196
 +381 (0) 65 2771-802 / +381 (0) 65 8410-651

NAPOMENA : TECNA ne proizvodi rashladne jedinice i kompresore. Ove elemente nabavljate sami prema potrebnim protocima

TECNA®

Italy

TECNA®
 **CONTROLLI PER SALDATURA** -  **WELDING CONTROL UNITS** -  **SCHWEISS-STEUERUNGEN**

 7
**ARMADIO DI CONTROLLO PER SALDATRICE A MEDIA FREQUENZA**

L'armadio di controllo, che comanda la saldatrice a media frequenza, integra l'inverter, il controllo di saldatura TE710, i dispositivi di protezione e sicurezza. Sono disponibili diverse taglie, dipendentemente dalla potenza della saldatrice.

CONTROLLO DI SALDATURA TE710

Programmazione semplificata con display alfanumerico LCD con messaggi nella lingua selezionata dall'utilizzatore.

300 programmi di saldatura memorizzabili, 16 dei quali richiamabili direttamente dall'esterno.

6 modalità di funzionamento: Corrente Costante, Potenza Costante, Tensione Costante, FIX, Energia Costante, DYNAMIC mode.

Limiti in: Corrente, Tensione agli elettrodi, Energia

materiale da saldare; limite sullo spessore e sull'ind

Regolazione dei tempi di saldatura in millesimi di se

Chiave asportabile per il blocco della programmaz

**KONTROLNA KUTIJA SA KONTROLNOM
JEDINICOM TE710 ZA KONTROLU
MF 1000 Hz UREĐAJA**

**CONTROL CABINET FOR MEDIUM FREQUENCY WELDERS**

The control cabinet, which controls the medium frequency welder, integrates the inverter, the welding control unit TE710, the protection and safety devices, There are different sizes available, depending on the power of the welder.

WELDING CONTROL UNIT TE710

Easy programming with LCD alphanumeric display showing messages in the language selected by user.

300 welding programs recordable, 16 programs directly selectable from external device

6 functions modes: constant current, constant power, constant voltage, FIX, constant energy, DYNAMIC mode

Limits in: current, voltage at the electrodes, energy, power, percentage of utilization of the inverter, initial and final resistance of the material welded, limit on the thickness and on the indentation of the material (optional)

Adjustment of the welding time in thousands of a second.

Removable key for programming lock.

**STEUERUNGSSCHRANK FÜR MITTELFREQUENZSCHWEISSMASCHINEN**

Der Steuerungsschrank, der die Mittelfrequenz-Schweissmaschine steuert, integriert den Inverter, die Schweiss-Steuerung Te710, die Schutz- u. Sicherheitsvorrichtungen. Es gibt je nach Leistung der Schweissmaschine verschiedene Größen.

SCHWEISS-STEUERUNG TE 710

Vereinfachte Programmierung mit alphanumerischem Display LCD mit Anzeige in der vom Bediener gewählten Sprache.

300 speicherbar Schweissprogramme, davon 16 direkt extern abrufbar.

6 Funktionsmodalitäten: Konstantstrom, Konstantleistung, Konstantspannung, FIX, Konstantenergie, Modalität DYNAMIC

Grenzwerte für: Strom, Spannung an den Elektroden, Leistung, prozentuale Anwendung des Inverters, Anfangs- u. Endwiderstand des zu schweisenden; Materials, Grenzwert bezüglich Dicke und Eindringtiefe des Materials (Option).

Schweissung mit drei verschiedenen Einstellungsfolgen, um gewünschte Stromprofile zu erreichen.

Zähler der ausgeführten Schweissungen und Programmiermöglichkeit der auszuführenden Punkteanzahl.

1553/W - 1554/W

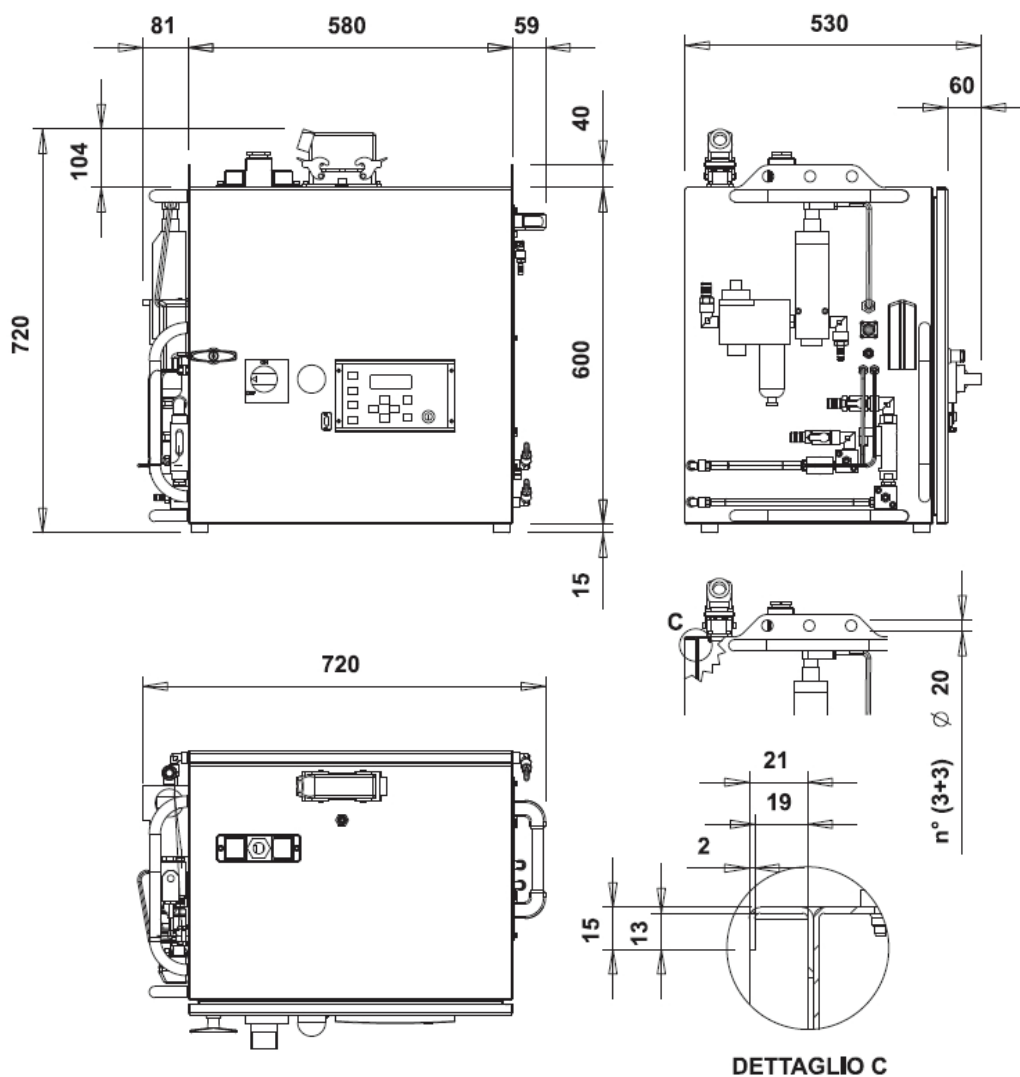
ALATISTHERM

ALATISTHERM d.o.o, Koče Kapetana 25
35230 Čuprija - Srbija ; +381 (0) 35 8471-196
+381 (0) 65 2771-802 / +381 (0) 65 8410-651

TECNA®

Italy

TECNA®

 CONTROLLI PER SALDATURA - WELDING CONTROL UNITS - SCHWEISS-STEUERUNGEN
1553/W - 1554/W
 8
1553/W - 1554/W**ALATISTHERM**

ALATISTHERM d.o.o , Koče Kapetana 25
 35230 Čuprija - Srbija ; +381 (0) 35 8471-196
 +381 (0) 65 2771-802 / +381 (0) 65 8410-651